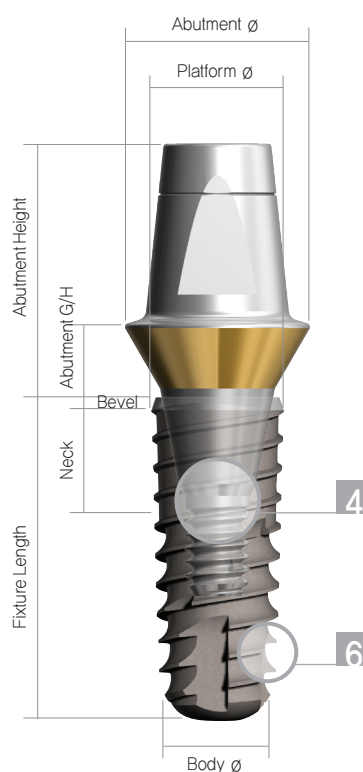
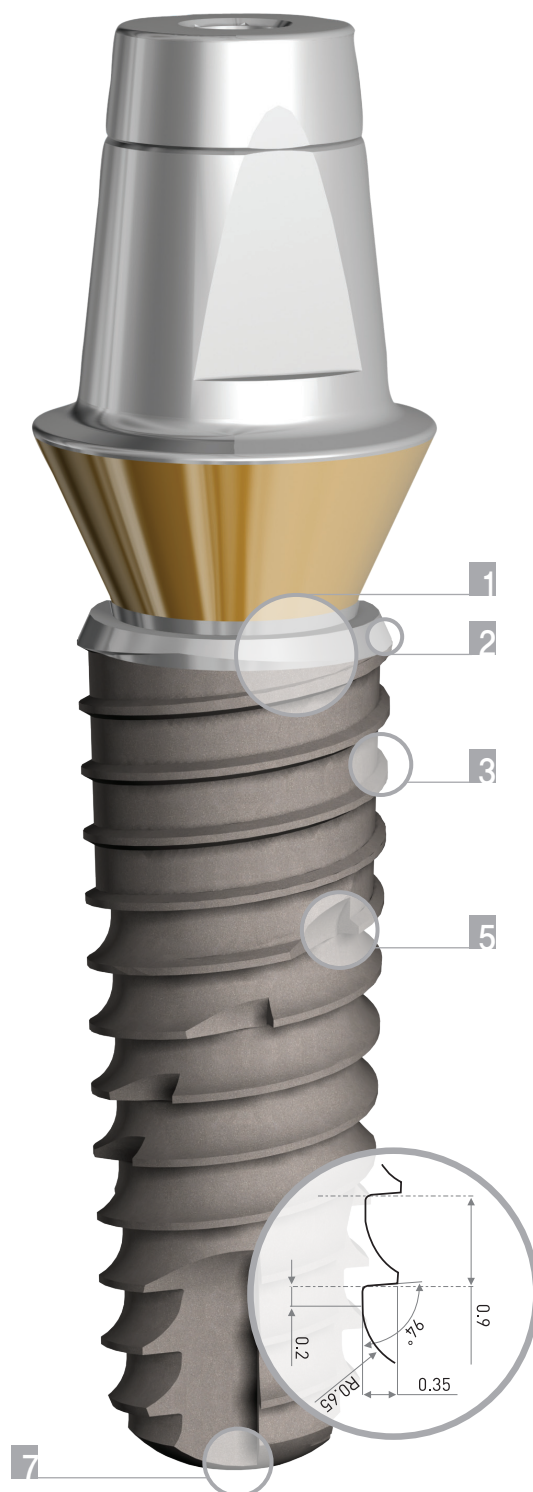
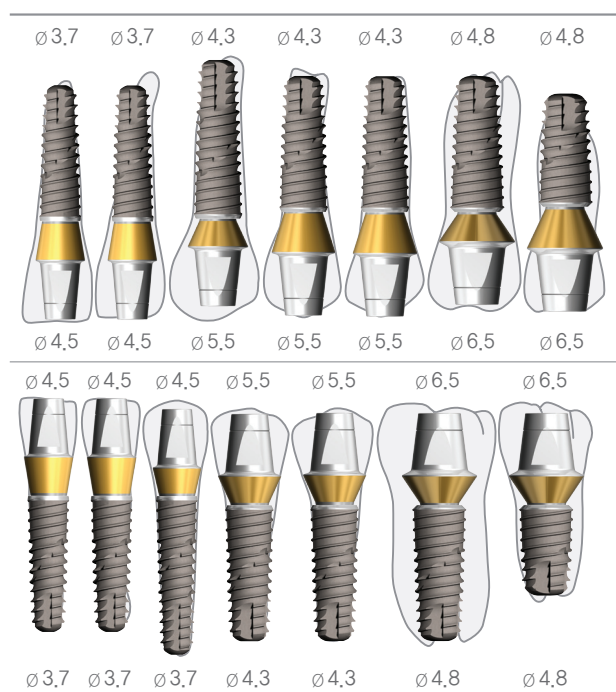


Features of CLEANLANT s-Clean_{tapered II}



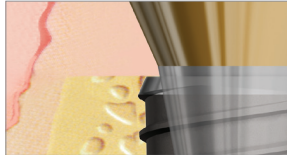
Selection Guide





1 Platform switching

- _ Platform switching helps to minimize bone loss that can reduce peak-stress and thereby preserve marginal bone.
- _ Effective to establish a certain biological width of the peri-implant mucosa



2 Smooth shoulder

- _ Smooth surfaced fixture shoulder helps immediate ensuring of insertion depth
- _ Allowing easy bone profiling at 1st, 2nd surgery

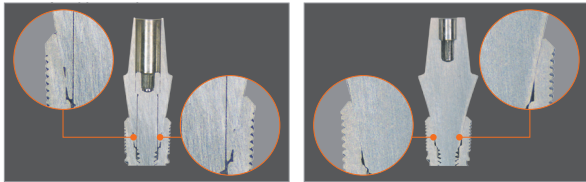
3 Synchronised wide thread

- _ Wide thread reduces bone stress in high density bone and allow smoother insertion



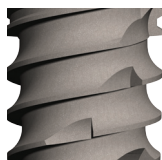
4 Hermetic sealing

- _ Hermetic sealing between fixture and abutment ensures even distribution of the load and minimizes the micro movement and



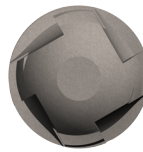
5 Safe Cutting Edge

- _ Reduction of bone stress, allowing smoother insertion



6 Self tapping groove

- _ Self tapping induction with a boosted up drilling capability
- _ Allow space for bone chip, boosting fixation strength



7 Dome End

- _ Less perforation possibility

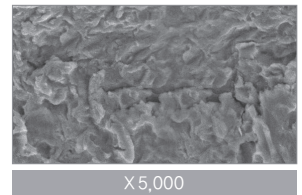
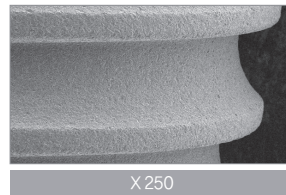


Tapered Design

- _ Tapered load distribution may effective to get good primary stability
- _ Less affection from adjacent teeth
- _ Help Immediate ensuring of a path during surgery

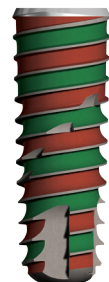
Optimum RBM surface

- _ Optimised 1,3–1,8 μm of roughness
- _ 192% enhanced magnification than smooth surface.

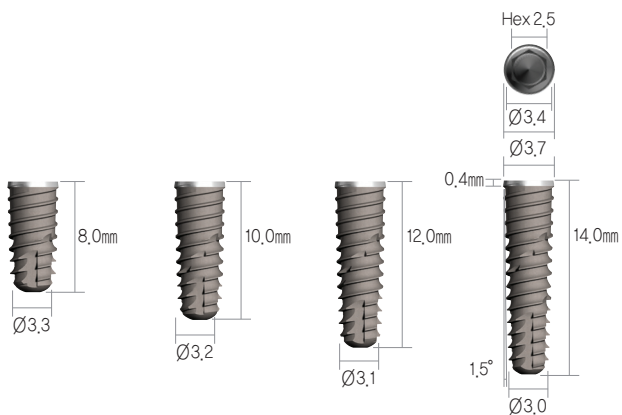


Double Thread Design

- _ Double Thread design will reduce chair time.

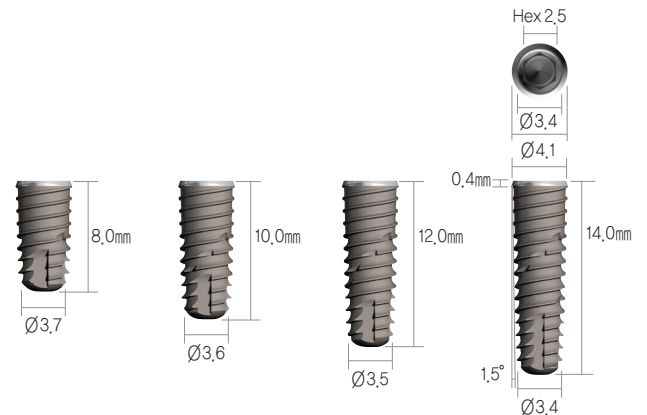


s-Clean tapered II



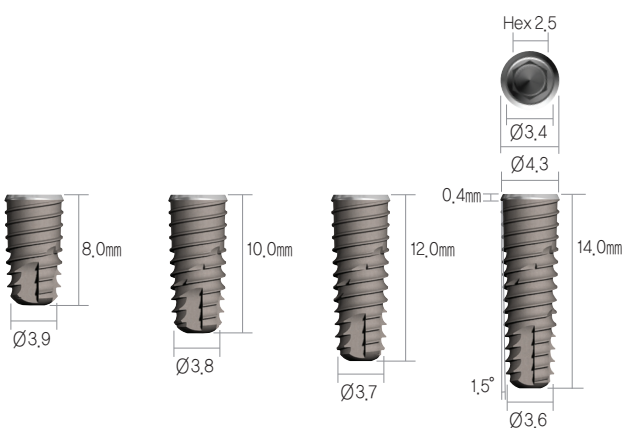
Mini		
Implant Diameter	Length	Code No.
Ø3.7	8.0mm	DS2FM3708S
	10.0mm	DS2FM3710S
	12.0mm	DS2FM3712S
	14.0mm	DS2FM3714S

※ Set Code : Fixture + Cover Screw



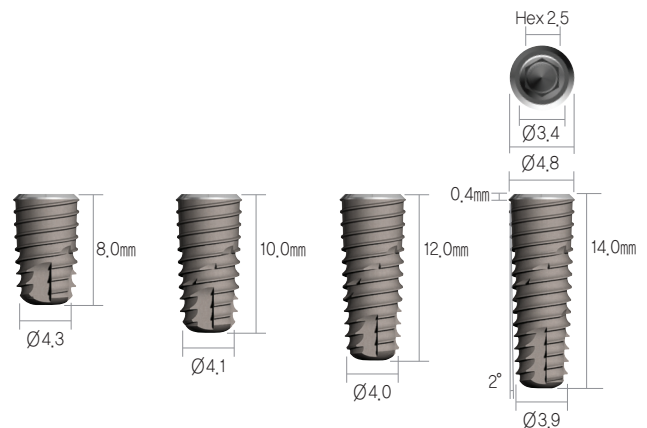
Regular		
Implant Diameter	Length	Code No.
Ø4.1	8.0mm	DS2FR4108S
	10.0mm	DS2FR4110S
	12.0mm	DS2FR4112S
	14.0mm	DS2FR4114S

※ Set Code : Fixture + Cover Screw



Regular		
Implant Diameter	Length	Code No.
Ø4.3	8.0mm	DS2FR4308S
	10.0mm	DS2FR4310S
	12.0mm	DS2FR4312S
	14.0mm	DS2FR4314S

※ Set Code : Fixture + Cover Screw



Wide		
Implant Diameter	Length	Code No.
Ø4.8	8.0mm	DS2FW4808S
	10.0mm	DS2FW4810S
	12.0mm	DS2FW4812S
	14.0mm	DS2FW4814S

※ Set Code : Fixture + Cover Screw